

AVer PTZ Link

— User Manual —

DISCLAIMER

No warranty or representation, either expressed or implied, is made with respect to the contents of this documentation, its quality, performance, merchantability, or fitness for a particular purpose. Information presented in this documentation has been carefully checked for reliability; however, no responsibility is assumed for inaccuracies. The information contained in this documentation is subject to change without notice.

In no event will AVer Information Inc. be liable for direct, indirect, special, incidental, or consequential damages arising out of the use or inability to use this product or documentation, even if advised of the possibility of such damages.

TRADEMARKS

“AVer” is a trademark owned by AVer Information Inc. Other trademarks used herein for description purpose only belong to each of their companies.

COPYRIGHT

© 2024 AVer Information Inc. All rights reserved. | May 16, 2024

All rights of this object belong to AVer Information Inc. Reproduced or transmitted in any form or by any means without the prior written permission of AVer Information Inc. is prohibited. All information or specifications are subject to change without prior notice.

More Help

For FAQs, technical support, software and user manual download, please visit:

Non-USA

Download Center: <https://www.aver.com/download-center>

Technical Support: <https://www.aver.com/technical-support>

USA

Download Center: <https://www.averusa.com/education/support>

Technical Support: <https://averusa.force.com/support/s/contactsupport>

Contact Information

Headquarters

AVer Information Inc.
8F, No.157, Da-An Rd.,
Tucheng Dist., New Taipei City
23673, Taiwan
Tel: +886 (2) 2269 8535

USA Branch Office

AVer Information Inc.,
Americas
44061 Nobel Drive, Fremont,
CA 94538, USA
Tel: +1 (408) 263 3828
Toll-free: +1 (877) 528 7824

Europe Branch Office

AVer Information Europe B.V.
Westblaak 134, 3012 KM,
Rotterdam, The Netherlands
Tel: +31 (0) 10 7600 550

Japan Branch Office

アバー・インフォメーション
株式会社
〒160-0023 日本東京都新宿区
西新宿 3-2-26 立花新宿ビル
7 階
Tel: +81 (0) 3 5989 0290
お客様サポートセンター(固定電
話のみ): +81 (0) 120 008 382

Vietnam Branch Office

Công ty TNHH AVer
Information
(Việt Nam)
Tầng 5, 596 Nguyễn Đình
Chiểu, P.3, Quận 3, Thành
phố Hồ Chí Minh 700000, Việt
Nam
Tel: +84 (0) 28 22 539 211
Hỗ trợ kỹ thuật: +84 (0) 90 70
080 77

Korea Office

한국 에버 인포메이션 (주)
서울시 종로구 새문안로 92
(신문로 1 가,
광화문오피시아빌딩) 1831,
1832 호
Tel: +82 (0) 2 722 8535

Contents

Overview	1
Compare Versions and Features.....	1
System Requirements	1
Supported AVer Cameras	2
Supported Microphones	3
Audio-Technica.....	3
Biamp.....	6
ClearOne.....	10
Nureva	11
Sennheiser.....	13
Shure	15
Yamaha.....	18
Install AVer PTZ Link	19
Minimize and Quit AVer PTZ Link.....	19
Connections	20
AVer PTZ Link Interface	21
Main Page	21
Device List	23
Set up Voice Tracking	25
Add Devices	25
Assign a Priority Group	27
Pair Microphone Channels with Presets.....	28
Save a Preset.....	32
Set up Active Position (Premium version)	35
AVer PTZ Link System Settings.....	40
System	40
License.....	42

Camera Setting	45
HTTP Request.....	46
Help Center	47
About.....	47
Privacy Policy	47
Troubleshoot.....	48
Appendix	50
AVerCamera Setting Tool	50
Control Panel	51

Overview

AVer PTZ Link is an application software that connects AVer cameras to third-party microphone systems (supported models) from Audio-Technica, Biamp, ClearOne, Nureva, Sennheiser, Shure to Yamaha.

It provides IP-based control and enables users to turn AVer cameras into voice-tracking cameras by setting preset points. It also enables users to create virtual cameras, perform automatic video switching, as well as tracking the presenter when human tracking is enabled in the Premium version.

Compare Versions and Features

	Free	Premium (60-Day Free Trial)
IP connectivity	✓	✓
USB connectivity		✓
Virtual camera (Windows only)		✓
Automatic video switching (Windows only)		✓
Human tracking		✓
Active position		✓
AVer camera + microphone groups	5	25
Microphone channels	8	128
Presets	256	256

System Requirements

	Minimum	Recommended
OS	Windows 7 (64-bit) or later macOS 10 or later	Windows 7 (64-bit) or later macOS 10 or later
CPU	Intel Core i5 10th Generation	Intel Core i7-10875H or greater
GPU		NVIDIA GeForce RTX 2070 or greater
RAM	8 GB	16 GB DDR4 or greater
Free storage space	800 MB	800 MB

Supported AVer Cameras

Professional Tracking Cameras

- Single Lens

V3	V2		V1	
	USA	Outside USA	USA	Outside USA
TR315	TR311HWV2	PTC310HWV2	TR310	N/A
TR315N	TR313V2	PTC310UV2	TR311	PTC310
TR335	TR333V2	PTC330UV2	TR311HN	PTC310N
TR335N	TR323V2	PTC320UV2	TR313	PTC310U
	TR323NV2	PTC320UNV2	TR331	PTC330
			TR333	PTC330U

- Dual Lens

V2	V1	
	USA	Outside USA
TR535	TR530+	PTC500+
TR535N	TR320+	PTC115+
TR525		
TR525N		

Professional PTZ Cameras (Do not support human tracking.)

V2	V1
PTZ330UV2	PTZ330
PTZ330UNV2	PTZ330N
PTZ310UV2	PTZ330W
PTZ310UNV2	PTZ310
PTZ231	PTZ310N
PTZ211	PTZ310W

Distance Learning Camera

DL30


Supported Microphones

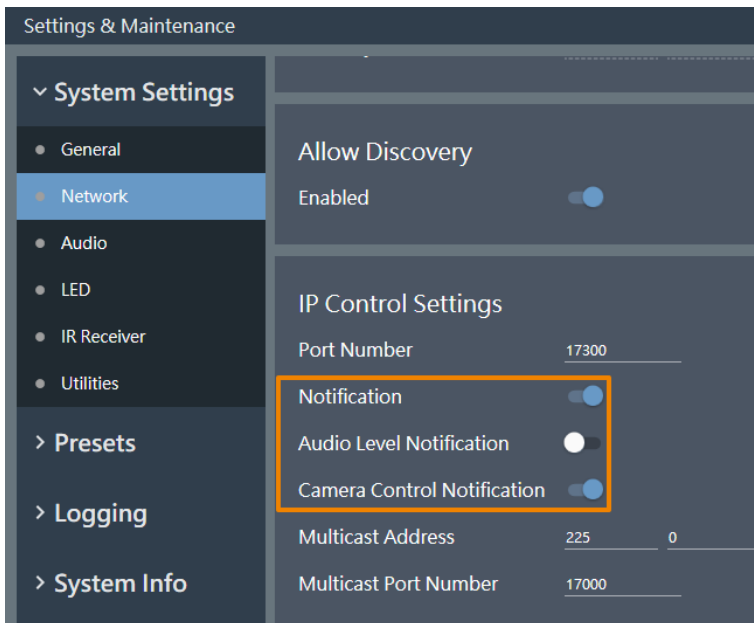
Some models may require setup in their manufacture software before using PTZ Link.

Audio-Technica

ATND1061LK/DAN
ATUC-50

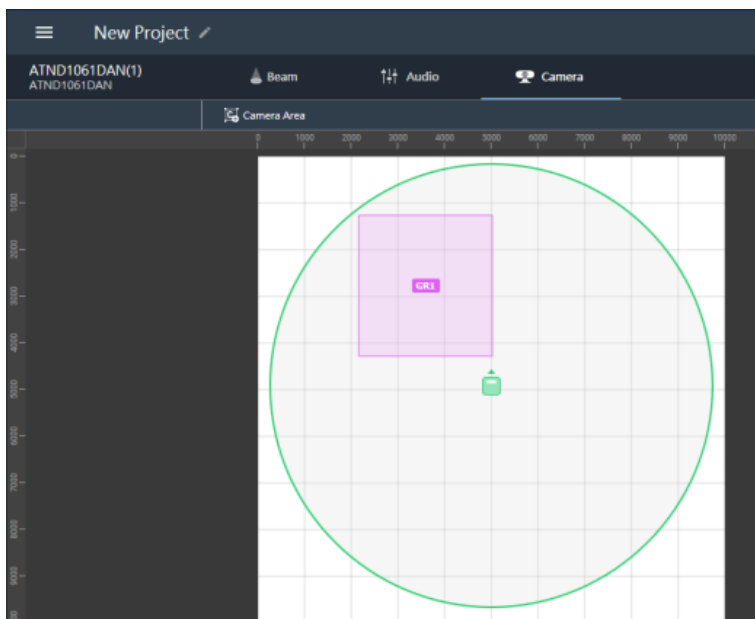
To set up ATND1061LK/DAN Beamforming Ceiling Array Microphone:

1. Open Digital Microphone Manager. Go to **Settings & Maintenance**  > **System Settings** > **Network** > **IP Control Settings**.
2. Turn on **Notification** and **Camera Control Notification**.



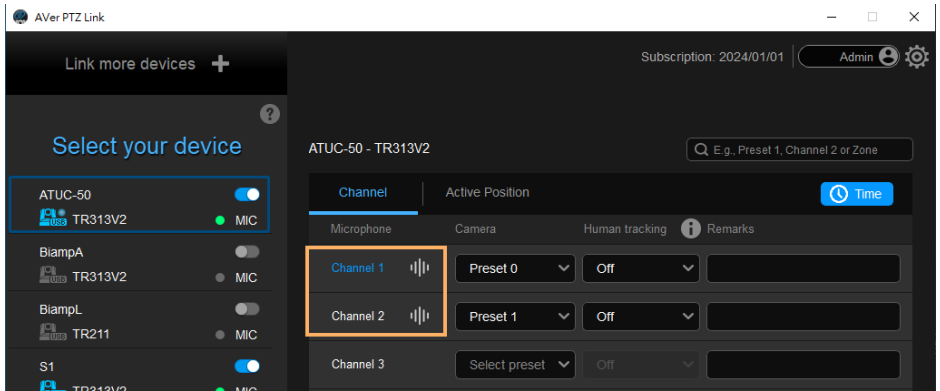
3. Select a microphone in the main area.

4. Go to **Camera > Camera Area**. Add a Camera Area by dragging it within the microphone pickup area.
- Each Camera Area group corresponds to AVer PTZ Link channel 1-8.



To pair ATUC-50 with AVer camera presets:

- Each ATUC-50CU wired control unit supports a total of 100 ATUC-50DU discussion units.
- Each ATUC-50DU discussion unit corresponds to AVer PTZ Link channel 1-100.
- A discussion unit whose talk button is pressed first takes priority over others until it is mute. For example, Channel 1 (pressed first) takes priority over Channel 2 whose talk button is also pressed.



Biamp

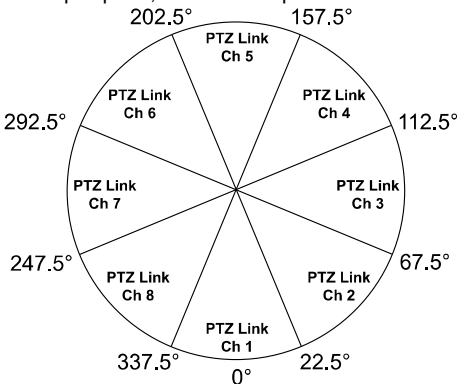
Tesira Digital Signal Processor
 Parlé Ceiling Microphones

Hardware and Channels Overview

Tesira Digital Signal Processor	Tesira Forte X, Tesira Forte Rackmount, Tesira Server IO, Tesira Server.
Parlé TCM-X	Plenum network box + one ceiling-mount microphone array
Parlé TCM-XA	Plenum network box with built-in amplifier+ one ceiling-mount microphone array
Parlé TCM-XEX	One expansion ceiling-mount microphone array

Up to 2 ceiling microphone arrays are permitted per network box (one TCM-X or TCM-XA with TCM-XEX).

Each ceiling microphone array has 8 channels. PTZ Link divides the microphones' horizontal angles into 8 equal parts, which correspond to PTZ Link Channel 1–8.

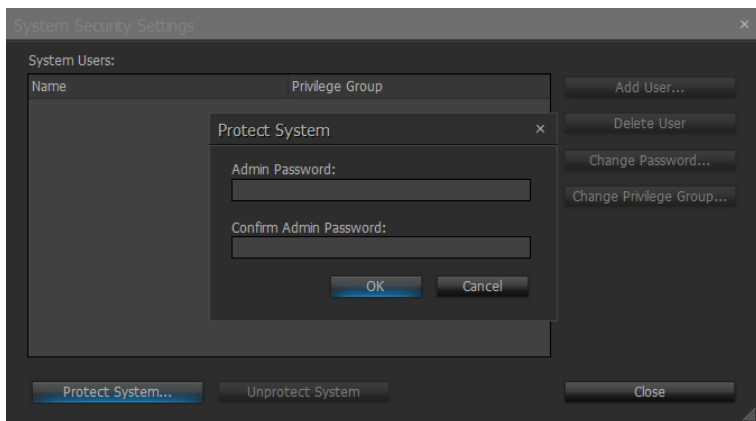


Microphone	Channel Start/End
AVerParleMic1	1-8 (ceiling mic 1) 9-16 (ceiling mic 2)
AVerParleMic2	17-24 (ceiling mic 1) 25-32 (ceiling mic 2)
AVerParleMic3	33-40 (ceiling mic 1) 41-48 (ceiling mic 2)
AVerParleMic4	49-56 (ceiling mic 1) 57-64 (ceiling mic 2)

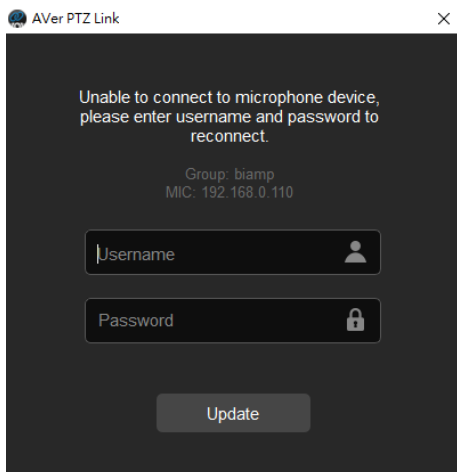
You can protect 3rd party media control access for the Tesira system using username and password.

To enable system security:

1. After the DSP has been configured, connect to the unprotected Tesira system with Tesira Designer Software.
2. Open the **System** menu > **Security** menu > **Manage System Security...**
3. Click the **Protect System...** button to create the admin user and password.



4. You'll be prompted to enter the same set of username and password when connecting to Biamp microphones in PTZ Link.

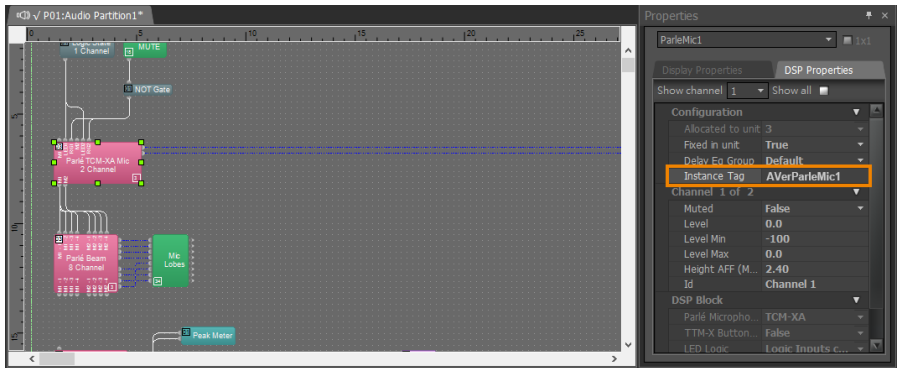


To set up Parl  TCM-X microphones:

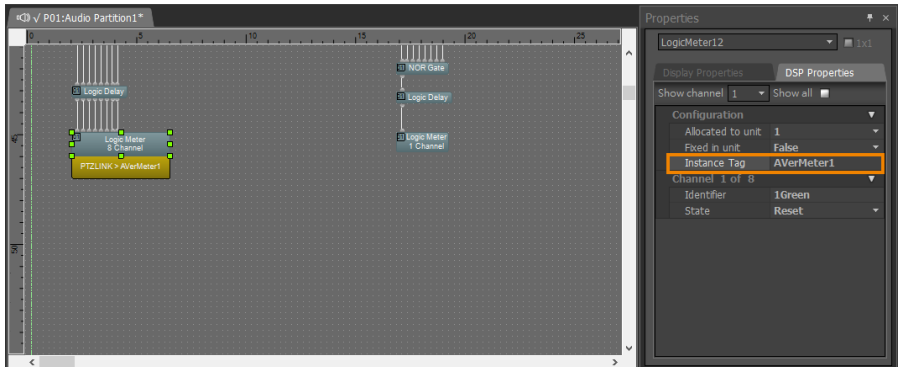
1. Open Tesira Design Software.
2. After the TCM-X microphone has been added to the layout, the instance tag of the Parl  microphone block or Logic Meter block to be controlled must use the following naming schemes.

To check or rename the instance tag of a specific block, click on that block, go to **Properties** panel > **DSP Properties** tab > **Instance Tag**.

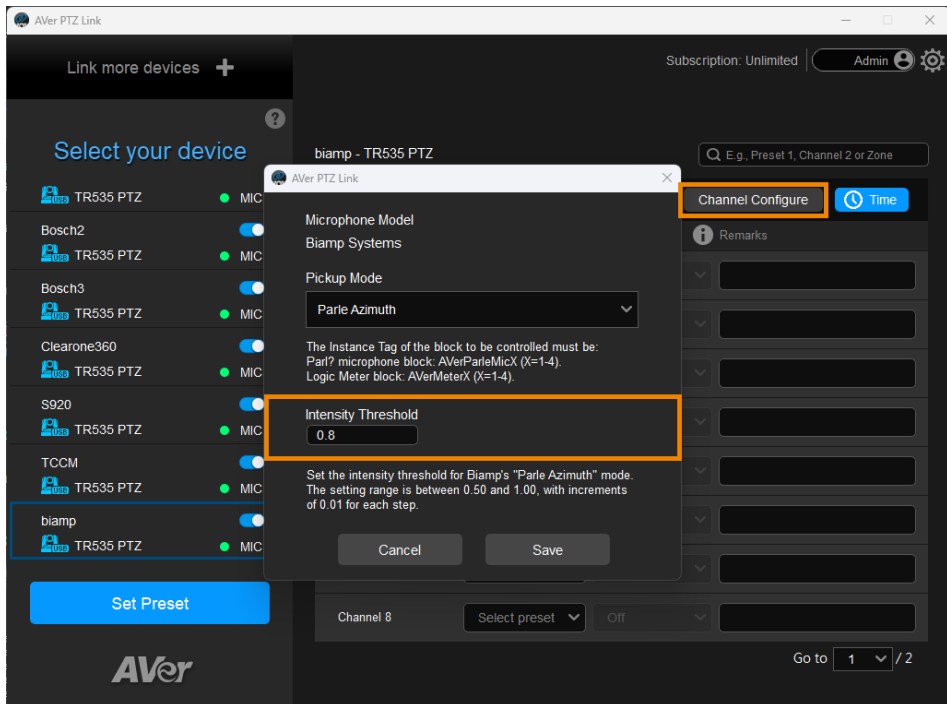
- Parl  microphone block: **AVerParleMicX** (X=1–4 starting with 1).



- Logic Meter block: **AVerMeterX** (X=1–4 starting with 1).



3. Click **Channel Configure** and select a pickup mode in PTZ Link. Then click **Save**. In **Parle Azimuth** mode, set the intensity threshold from 0.50 to 1.00 in increments of 0.01.



ClearOne

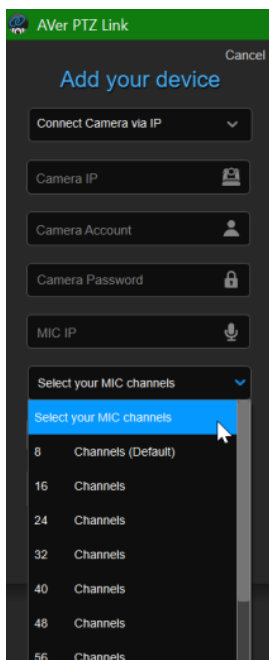
BMA 360 Microphone System

CONVERGE® Pro 2 (supports up to 3 daisy-chained BMA 360s)

- AVer PTZ Link assigns 12 channels to each BMA 360. Unused channels are retained in the assigned BMA 360.

Daisy-Chained	Channel Start/End
1 st BMA 360	1-12
2 nd BMA 360	13-24
3 rd BMA 360	25-36

- When adding your device in PTZ Link, select your MIC channels in the drop-down list according to the number of BMA 360 daisy-chained.

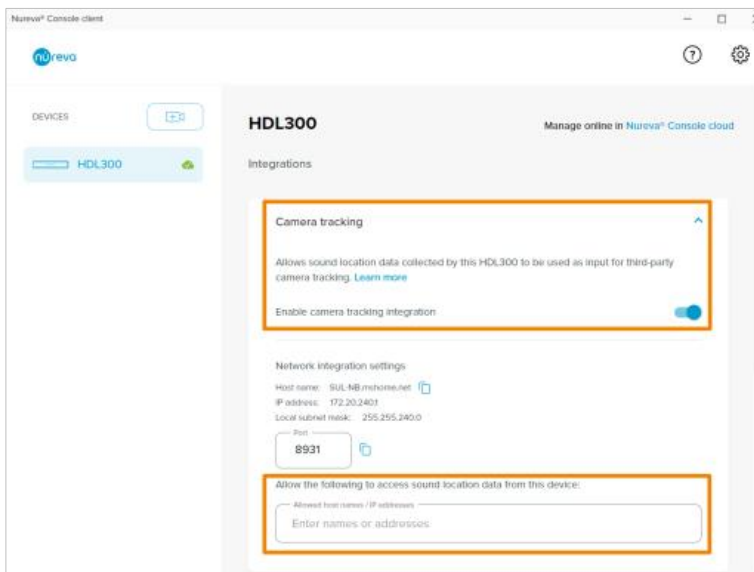


Nureva

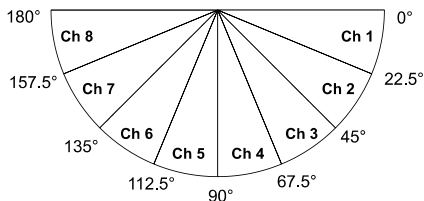
- HDL300
- HDL310
- Dual HDL300
- HDL410

To set up HDL microphones:

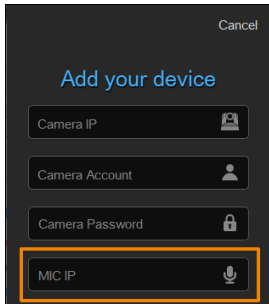
- Nureva Console Client:
 1. Turn on **Enable camera tracking integration**.
 2. Enter the IP address of the computer running AVer PTZ Link in the **Allowed host names / IP addresses** field.



- AVer PTZ Link:
 - AVer PTZ Link divides HDL microphones' horizontal angles into 8-24 equal parts, which correspond to AVer PTZ Link channel 1-24.

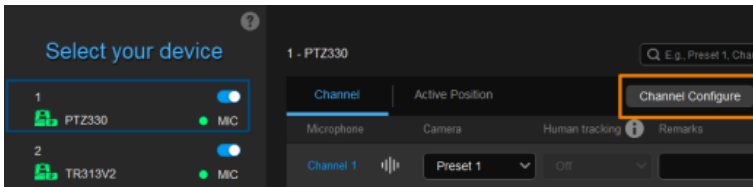


- Enter the IP address of the computer running Nureva Console Client as **MIC IP** in AVer PTZ Link.

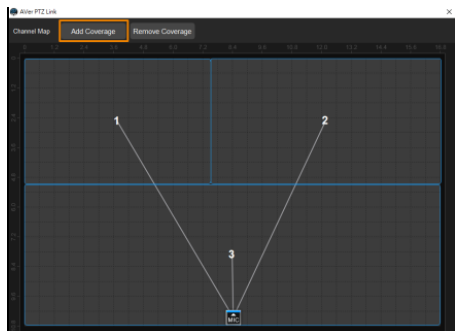
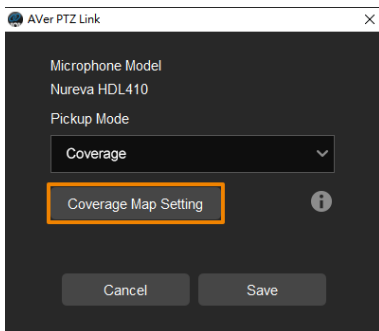


To add a coverage area for HDL410 in AVer PTZ Link:

1. Click **Channel Configure** on the main page.



2. Select **Coverage** from the **Pickup Mode** drop-down list.
3. Click **Coverage Map Setting** > Click **Add Coverage**.



4. Add a coverage area by dragging it.

- You can add up to 8 coverage areas per microphone.
- When coverage areas overlap, the microphone will default to the area with the smaller number.

Sennheiser

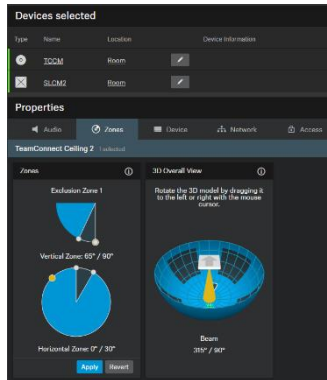
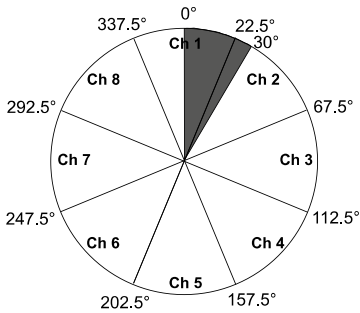
TeamConnect Ceiling 2
TeamConnect Ceiling Medium

AVer PTZ Link divides TeamConnect Ceiling 2's and TeamConnect Ceiling Medium's horizontal angles into 8-24 equal parts, which correspond to AVer PTZ Link channel 1-24.

● TeamConnect Ceiling 2

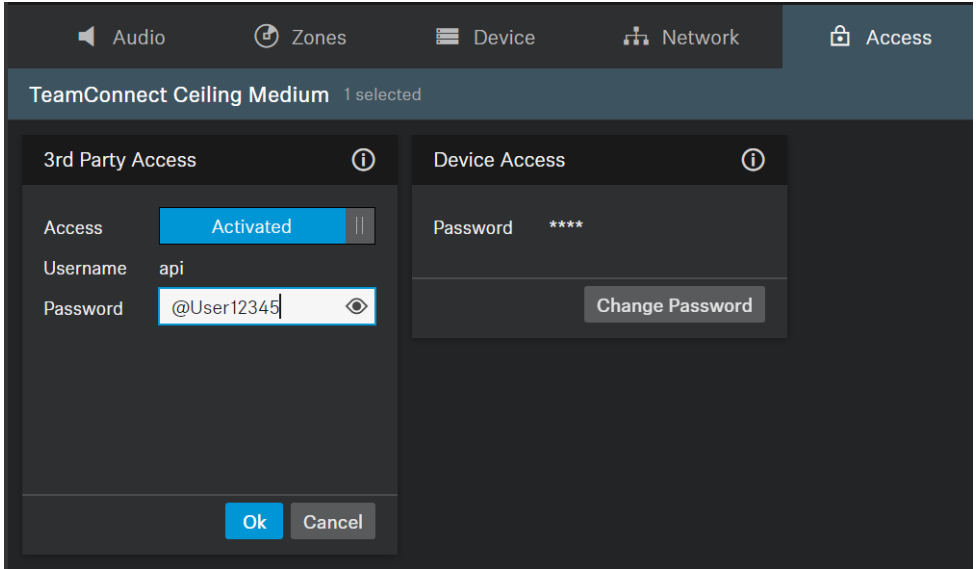
An Exclusion Zone set in Sennheiser Control Cockpit also affects the corresponding channel in AVer PTZ Link.

Sennheiser Control Cockpit



- **TeamConnect Ceiling Medium**

The 3rd party media control access for TeamConnect Ceiling Medium is encrypted and protected using username and password. It has to be enabled using Sennheiser Control Cockpit before use.



To set a 3rd Party device control password:

1. Open Sennheiser Control Cockpit. Go to the **Access** tab in the device configuration page.
2. Activate the toggle switch.
3. Enter a password.
4. You can use the username "api" and configured password for your API calls.

Note:

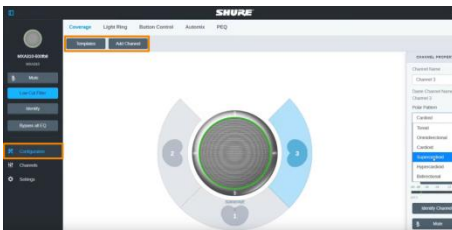
- If you deactivate 3rd party access, the previously set password will be deleted.
- Password must be at least 10 characters and no more than 64 characters. Use at least one lowercase letter, one uppercase letter, one number and one special character (!#\$%&()*+,-./:;<=>@[^_{}~)-).

Shure

Microflex® Complete Wireless
IntelliMix® P300 Audio Conferencing Processor
MXA710 Linear Array Microphone
MXA310 Table Array Microphone
MXA910 Ceiling Array Microphone
MXA920 Ceiling Array Microphone

● MXA310 Table Array Microphone

Web Application



1. Open the **Configuration** tab.
2. Select a template from the multi-channel options. Or select **Add Channel** to add more than 1 channel.
 - AVer PTZ Link does not support single channel for the MXA310.

● MXA910 Ceiling Array Microphone

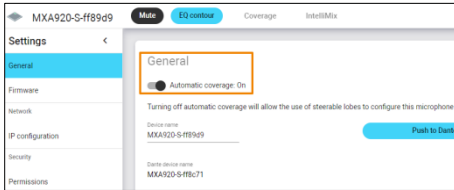
Web Application



1. Go to **IntelliMix > Automixer Properties > Deselect Leave last mic on.**

● MXA920 Ceiling Array Microphone

Web Application



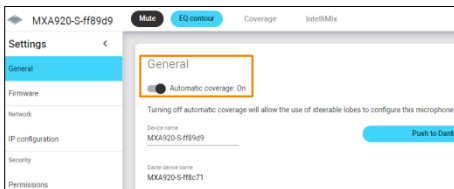
To manually position up to 8 lobes:

1. Go to **Settings > General > Automatic coverage**.
2. Turn off **Automatic coverage**.
3. Go to **IntelliMix > Automixer Properties > Deselect Leave last mic on**.

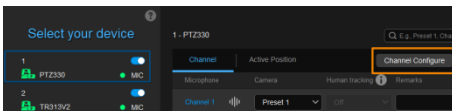


To add a mix of up to 8 dynamic and dedicated coverage areas:

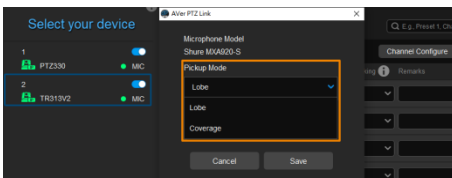
1. Go to **Settings > General > Automatic coverage**.
2. Turn on **Automatic coverage**.
 - The default setting is a 30 by 30 foot (9 by 9 meter) dynamic coverage area.
3. To add more coverage areas, go to **Coverage > Add coverage**.



AVer PTZ Link



4. Click **Channel Configure** on the main page.



5. Select a **Pickup Mode** from the drop-down list:

- **Lobe:** The lobes you have positioned in the MXA920's web application. They correspond to AVer PTZ Link

channel 1-8.

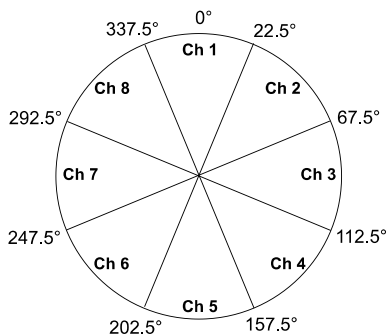
- **Coverage:** The coverage areas you have added in the MXA920's web application. They correspond to AVer PTZ Link channel 1-8.

6. To integrate with supported AVer camera tracking system via active talker positions, please refer to <[Active Position Setup](#)>.

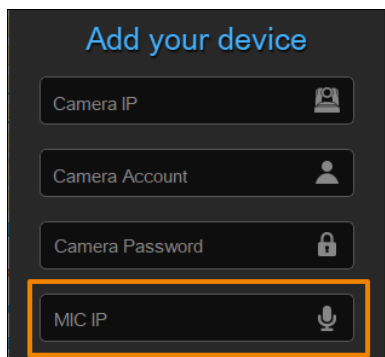
Yamaha

RM-CG Ceiling Array Microphone
RM-TT Tabletop Array Microphone
RM-CR Remote Conference Processor
RM-W Wireless Microphone System

- AVer PTZ Link divides RM-CG's horizontal angles into 8-24 equal parts, which correspond to AVer PTZ Link channel 1-24.



- AVer PTZ Link voice tracking function requires linking more than one RM-TT or RM-W microphones for location data.
- When linking these microphones to the RM-CR Remote Conference Processor, enter the processor's IP address as **MIC IP** in AVer PTZ Link.



Install AVer PTZ Link

1. Download AVer PTZ Link from AVer Download Center. (<https://www.aver.com/download-center>).





Note: The installer bundles AVer PTZ Link and AVerCamera Setting Tool, a software that supports the operation of AVer PTZ cameras when you stream to a video conferencing software.

2. Double-click the downloaded .exe file.
3. Follow the instructions on the setup wizard to install AVer PTZ Link.




Minimize and Quit AVer PTZ Link

You can minimize AVer PTZ Link to the taskbar or a floating window during a video conference.

To minimize AVer PTZ Link to the taskbar:



1. Go to **Settings**  > **System** > disable **Screen widget**.
2. Click the minimize button  on the top-right corner of the AVer PTZ Link window.
3. To make the minimized AVer PTZ Link active, click the **Show hidden icons** arrow  on the taskbar, right-click the AVer PTZ Link icon , and select **Open AVer PTZ Link**.

To minimize AVer PTZ Link to a floating window:

1. Go to **Settings**  > **System** > enable **Screen widget**.
2. Click the minimize button  on the top-right corner of the AVer PTZ Link window.
3. To make the minimized AVer PTZ Link active, click the maximize button  on the floating window.

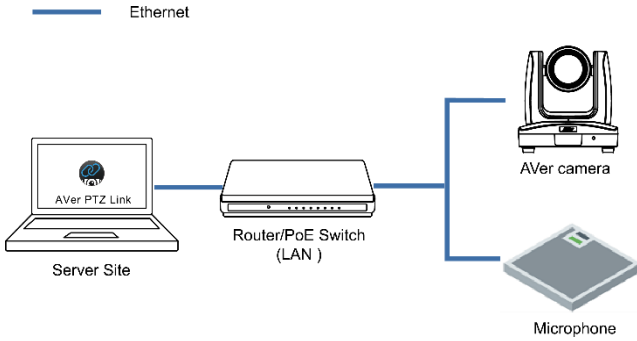
To quit AVer PTZ Link:

Click the X button  on the upper-right corner of the AVer PTZ Link window.

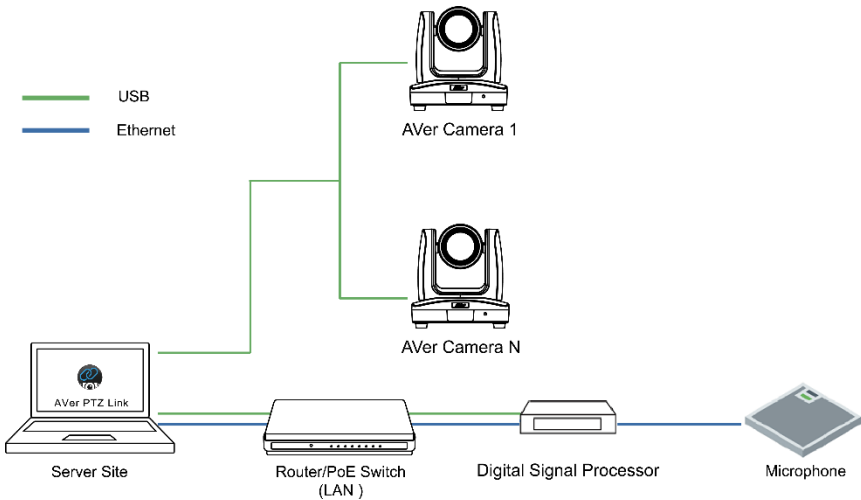
Or click the **Show hidden icons** arrow  on the taskbar, right-click the AVer PTZ Link icon  and select **Exit**.

Connections

- Make sure all devices are connected and powered on.
- For IP Camera connection (free version), all devices are suggested to be connected on the same LAN, or UDP port-52381 & TCP port-2202 must be available between devices.

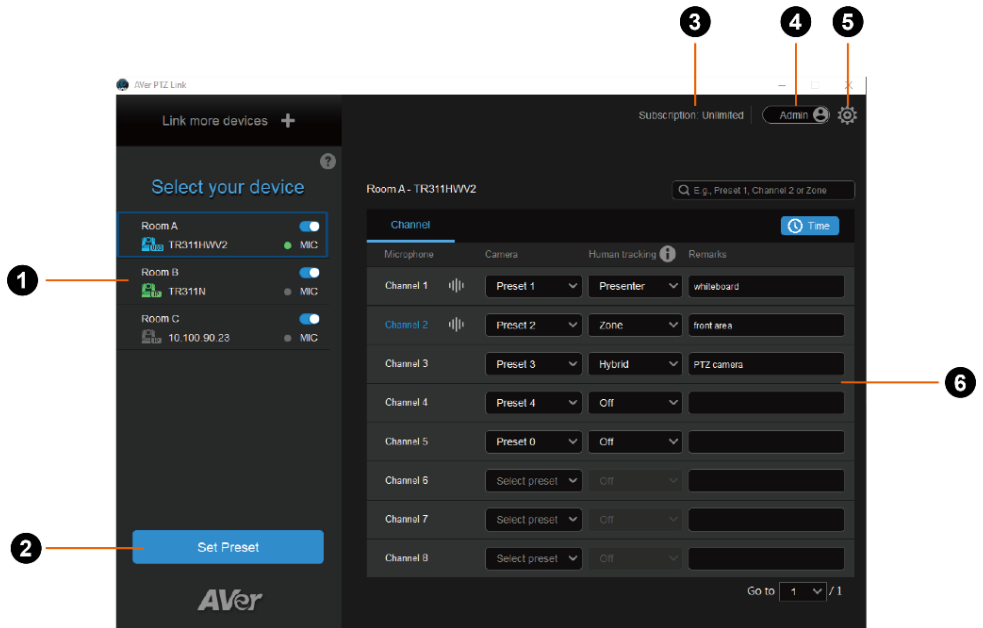


- For Virtual Camera connection (premium version), connect the camera to the USB port on the server site.



AVer PTZ Link Interface

Main Page



1. Device List

Displays added camera and microphone groups.

2. Set Preset

Click to save presets

3. Subscription Status

Displays the subscription status or the expiration date of your free trial.

4. Account Name

Display your account type.

- **Admin:** Log in with an administrator account to have full access to all functions.
- **User:** Log in with a user account to have access to the limited functions. To switch to **Admin** account, click the toggle and enter the administrator account password. To switch back to **User** account, exit and restart AVer PTZ Link.

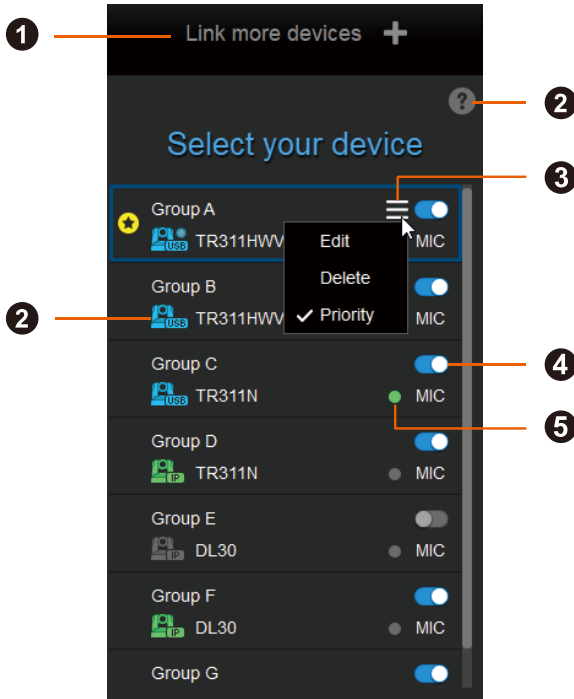
5. System Settings

Click to open the system settings window.

6. Voice Tracking

Frame the active talker with voice tracking by pairing microphone channels with presets.

Device List



1. Link More Devices +

Click to add device groups.


2. Camera Status

Click the **question mark** icon to see what each camera icon means.

Icon	Camera Status
	Device online.
	Device offline
	Virtualcam is sent to the third party program
	Virtualcam is enabled
	Incorrect account or password
	Inactivated

3. Hamburger Menu

Hover your cursor over a device group to see the hamburger menu.

- Edit: Edit the device group.
- Delete: Delete the device group.
- Priority: Assign a priority group. The **star** icon  indicates a priority group.

4. Enable/Disable Toggle

Toggle to enable or disable a device group.

5. Microphone Status

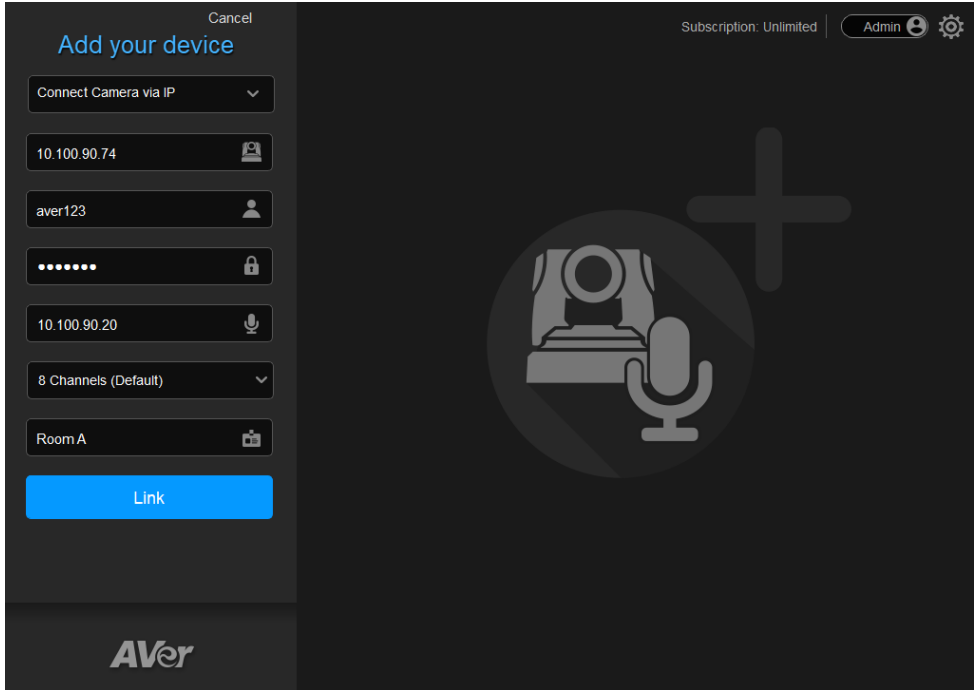
Green: online

Gray: offline

Set up Voice Tracking

Add Devices

You can add up to 5 camera + microphone groups (free version) or 25 camera + microphone groups (premium version) to the device list.



1. Click **Link more devices +** on the upper-left corner of the main page.
2. Select **Connect Camera via IP** or **Connect Camera via USB** (premium version) from the drop-down list.

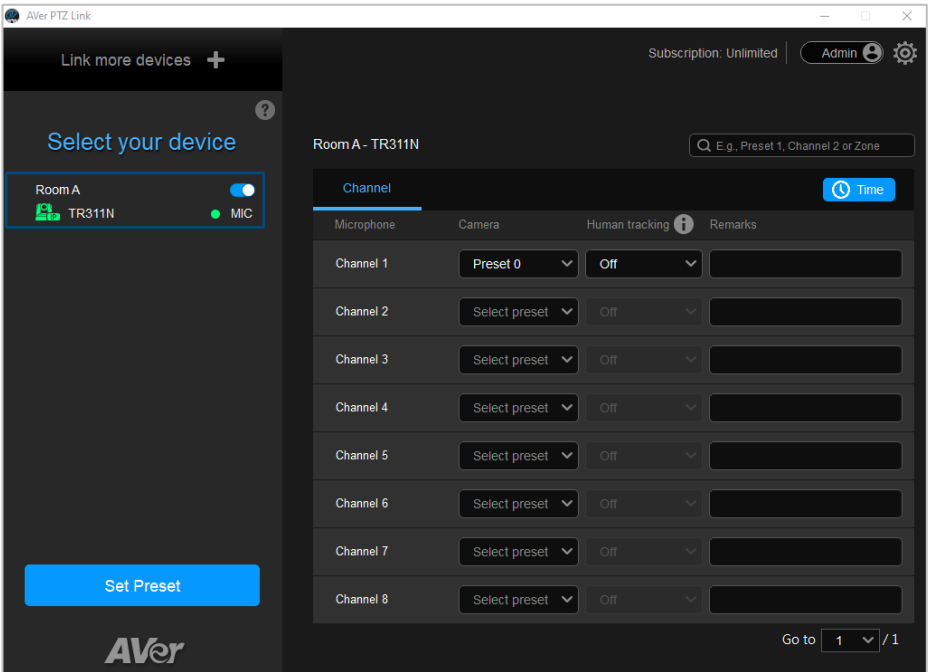
Note:

- Make sure you have turned off sleep mode on the connected USB camera.
- The resolution of connected USB camera for video conference should be 720p or higher.

3. Enter the camera and microphone information.

Items	Description
Camera IP	Enter the IP address of the camera. You can add both online and offline cameras.
Camera Account	Enter the account of the camera.
Camera Password	Enter the password of the camera.
MIC IP	Enter the IP address of the microphone.
MIC Channels	Select the number of microphone channels.
Device Name	Enter a name for the device group in fewer than 20 characters.

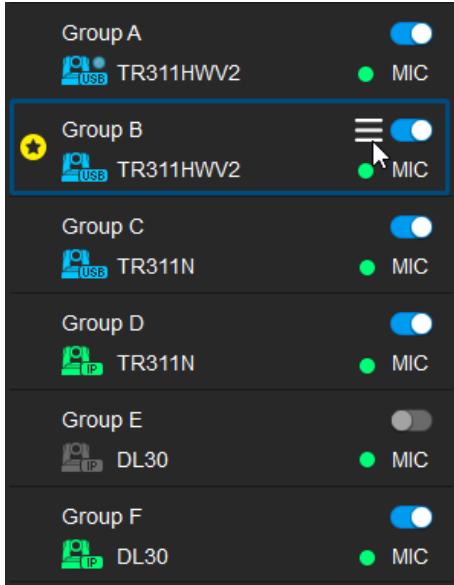
4. Click **Link** to add the camera and microphone group to the device list.





5. You can also assign a priority Group if multiple device groups share the same camera. To assign a priority group, please refer to [<Assign a Priority Group>](#).


Assign a Priority Group

When multiple microphone groups share one camera and receive the same sound source, the camera goes to the preset defined in the priority group.



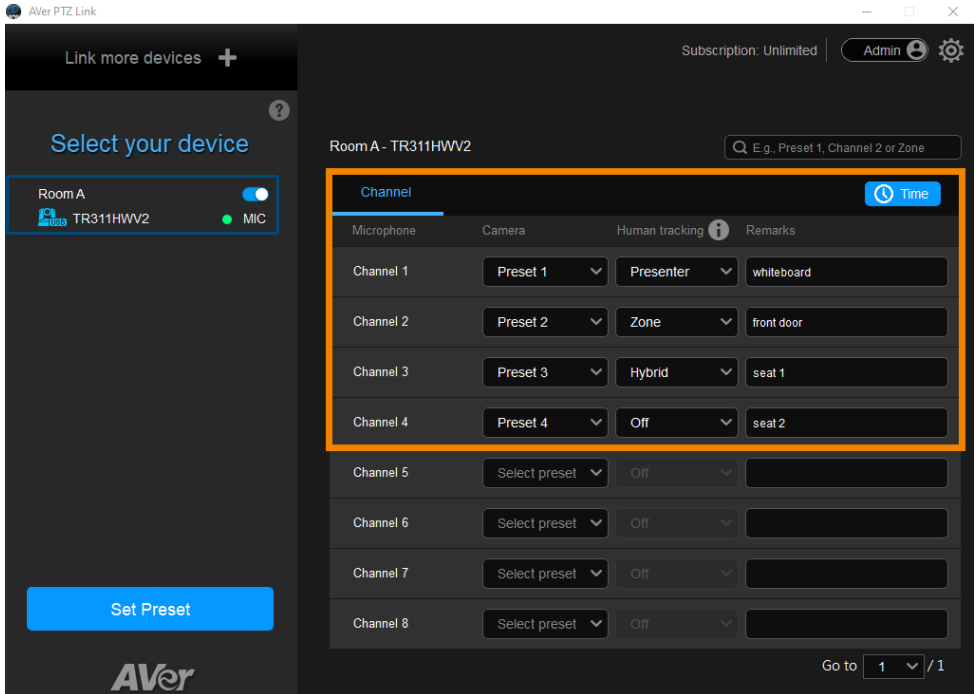
To assign a priority group:

1. Hover your cursor over a group, then click the **hamburger** icon .
2. Select **Priority**. The **star** icon  indicates a priority group.
3. To cancel priority, deselect **Priority**.

Note: If you want the camera live view to switch to the priority group when the microphone detects no sound, click the **Time** button  and set up **Time to go to Preset 0** by selecting **Enable after below time interval**.

Pair Microphone Channels with Presets

Pairing microphone channels with presets turns AVer cameras into voice tracking cameras. When the camera detects sound sources from a microphone channel (lobe), the camera will turn to the paired preset and frame the speaker.



1. Click to select a camera on the device list. Make sure you have defined the required presets of the selected camera. For details on saving presets, please refer to [<Save a Preset>](#).
2. Select the **Channel** tab, then select the preset from the **Camera** drop-down list to pair each microphone channel with a preset.

3. You can also select a tracking mode from the **Human tracking** drop-down list to follow the presenter in real time as they move. Make sure you have configured tracking modes on the camera web interface.



Microphone detects voice




Camera goes to preset

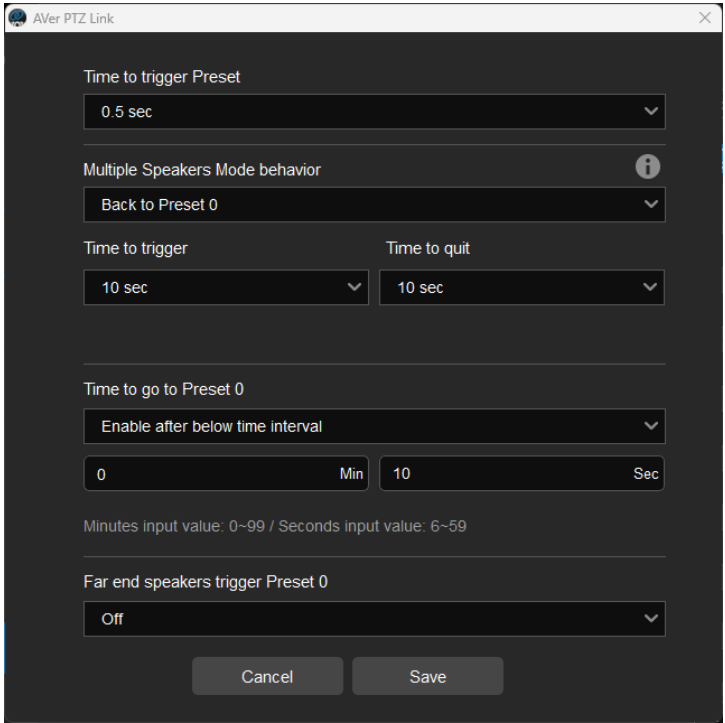


Presenter Tracking

Note: Tracking modes may vary depending on your AVer camera model.

4. Add **Remarks** to identify the paired microphone channel and preset. The remarks can also appear as text overlays on the live view for USB cameras. To turn on, go to **System Settings > Camera Setting > Display channel remarks on virtual camera**.


5. Click the **Time** button  to set up the duration to go to a preset or the home position (preset 0).

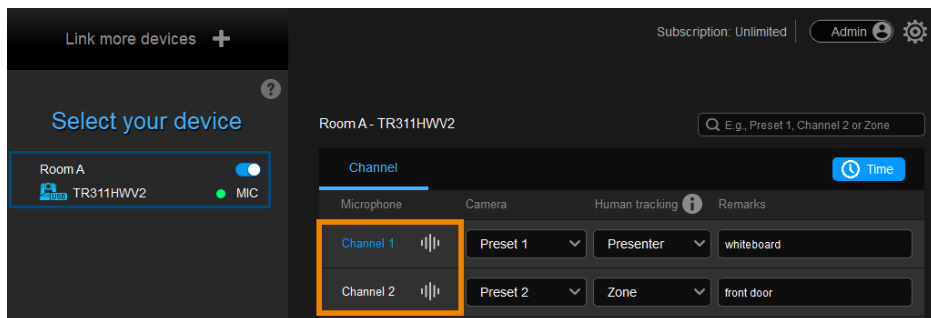


Item	Description
Time to trigger Preset	Select a duration for the camera to go to a preset after the paired microphone detects a sound.
Multiple Speakers Mode behavior	<ul style="list-style-type: none"> ● Select Back to Preset 0 to enable Multiple Speakers Mode. ● Multiple Speakers Mode will be triggered when the camera has been ping-ponging between sound sources 3 times. The camera will return to preset 0 to minimize disorienting movements. ● The length of Time to trigger and Time to quit must be 3 times the length of Time to trigger Preset.
Time to go to Preset 0	When Enable after below time interval is selected, enter a duration for the camera to go to Preset 0 after the paired microphone detects no sound. If you have assigned a priority group, the camera live view will also switch to that group.

Far end speakers trigger Preset 0 (Sennheiser microphones only)

When a microphone detects sound from the far end of the room such as during a video conference, the paired camera will go to Preset 0 and displays the camera live view.

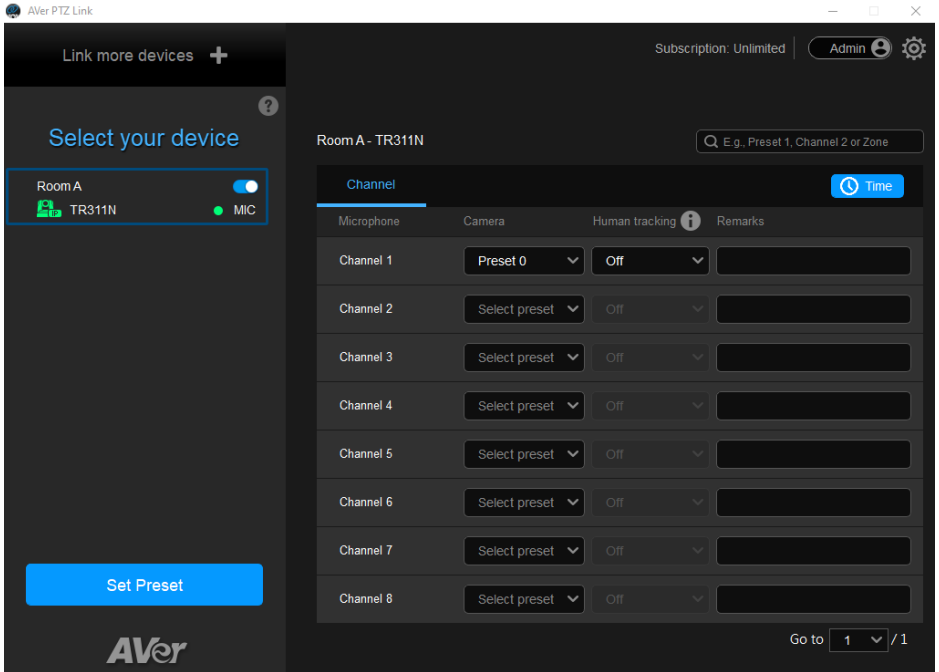
6. When the microphone detects voices, the **voice tracking** icon  will appear next to the channels. The channel in blue text indicates the current preset.



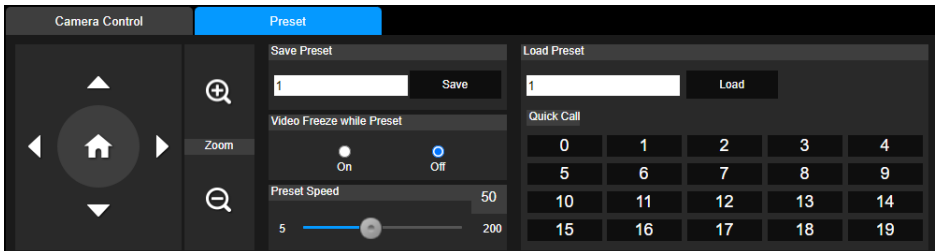
Save a Preset

To save a preset for IP cameras:

1. Click to select an IP camera on the device list.

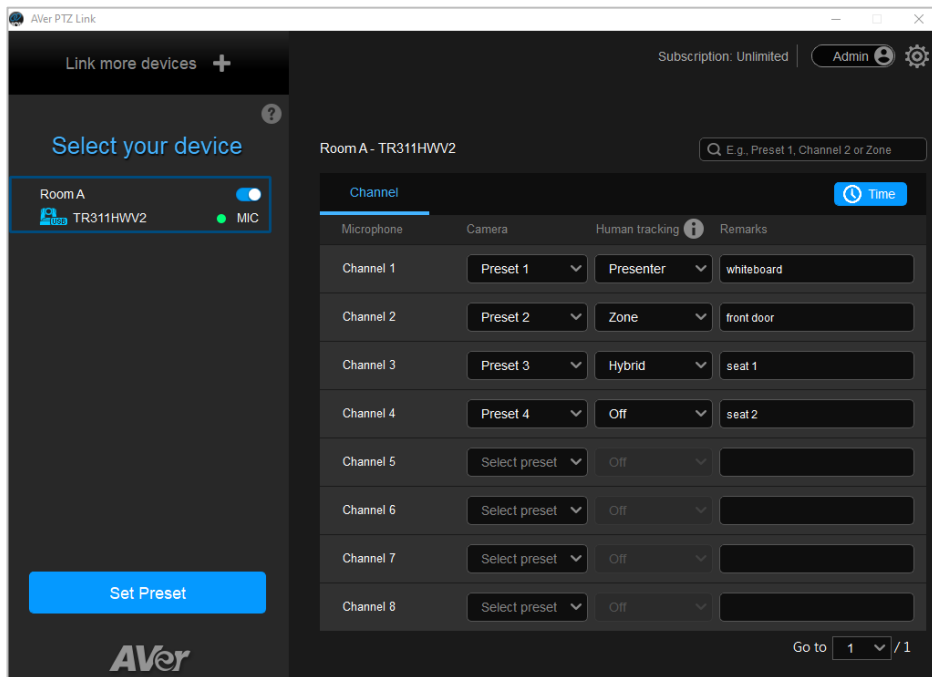


2. Click **Set Preset**. AVer PTZ Link will open the camera web interface in your browser.
3. On the web interface, go to **Live View > Preset**.
To save a preset, position the camera using pan, tilt and zoom controls. Enter a preset number (0–255) in the **Save Preset** field and click **Save**.



To save a preset for USB cameras (Premium version):

1. Click to select an USB camera on the device list.



2. Click **Set Preset**. AVer PTZ Link will launch AVerCamera Setting Tool.
3. Select a USB camera from the drop-down list.



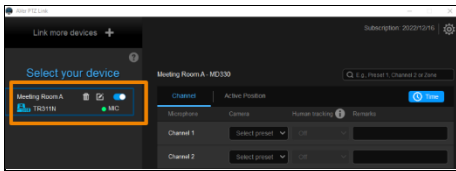
4. To save a preset, click to select a preset number you want to save, position the camera using pan tilt and zoom controls, and then click **Save** to save that position. You may return to your defined position at any time by clicking the preset number.

Set up Active Position (Premium version)

Active Position reports active talker positions from supported microphones in the form of X, Y, Z coordinates to deliver enhanced camera tracking.

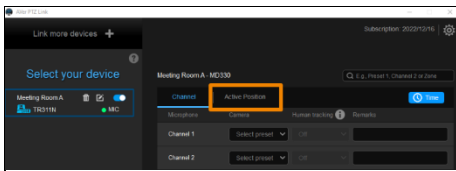
Active Position supports USB-connected AVer cameras and Shure MXA920 Ceiling Array Microphone.

To set up Active Position:

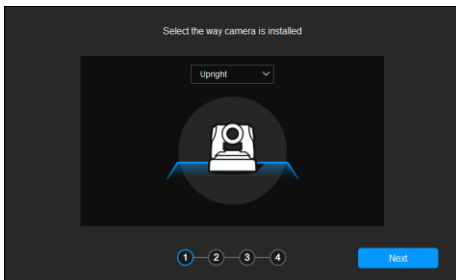


1. Make sure the USB-connected AVer camera has been paired with a Shure MXA920 in <[Add Devices](#)>.

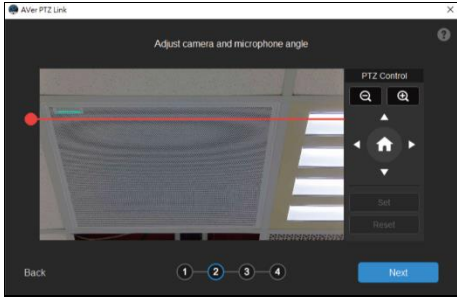
2. Click to select your device group. A blue frame will indicate that it is selected.




3. Click the **Active Position** tab. For first-time setup, fine-tune the camera and microphone as prompted.

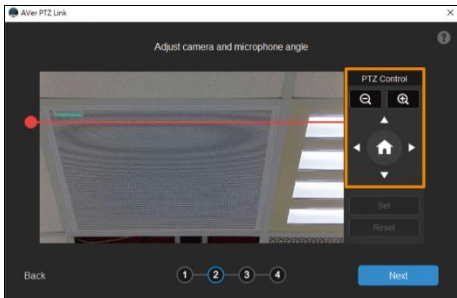
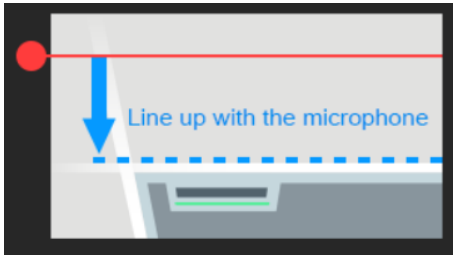


4. Select the way camera is installed from the drop-down list and click **Next**.



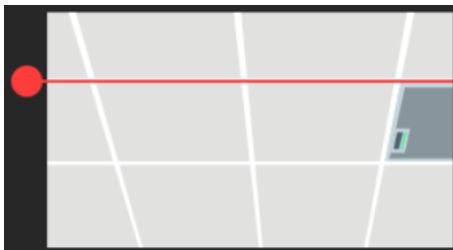
1. Align the red line with the top or bottom edge of the microphone by dragging the red dot.

- Click the question mark  for reference.



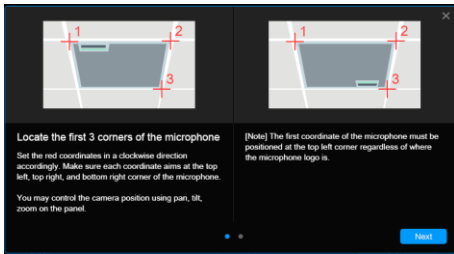
6. Adjust the camera angle using pan, tilt and zoom controls, if the microphone appears at a slight angle.

- Zoom controls here are for alignment only and don't affect the zoom ratio of the camera.




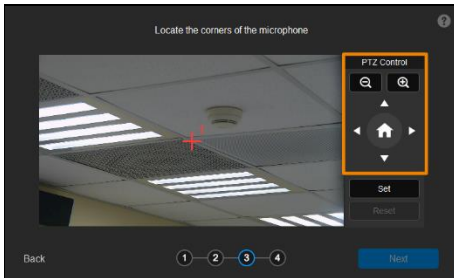
- The microphone doesn't need to be in the center of the live view, as long as the red line is aligned with the edge.

7. Click **Next**.



8. Starting with the upper left, locate 3 microphone corners in a clockwise direction.

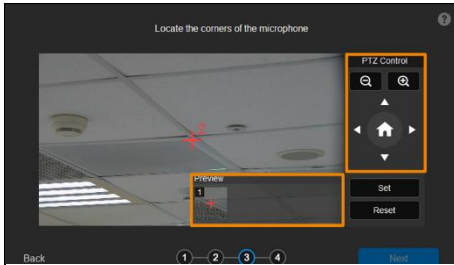
- Click the question mark  for reference.

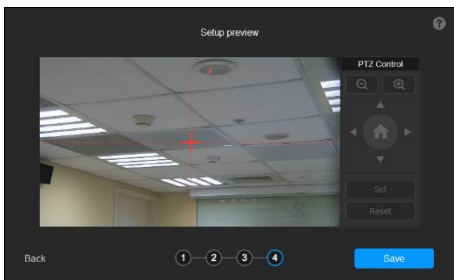
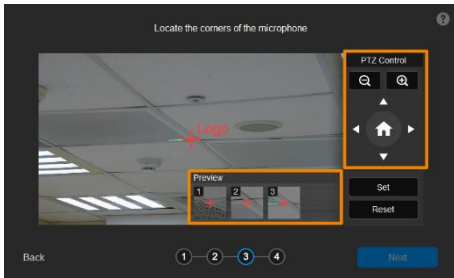
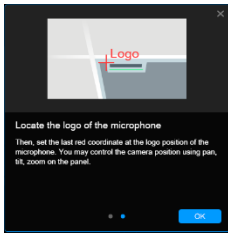


9. Move the red cross to the 1st corner (upper left) in the live view using pan, tilt and zoom controls.

10. Click **Set**. The saved location will appear in the thumbnail.

11. Repeat the steps to location the 2nd (upper right) and 3rd corners (lower right).





12. Finally, locate the logo on the microphone to indicate its orientation. Move the red cross to the logo in the live view using pan, tilt and zoom controls.

- Depending on the microphone orientation, the logo corner may be the same as one of the 3 corners.

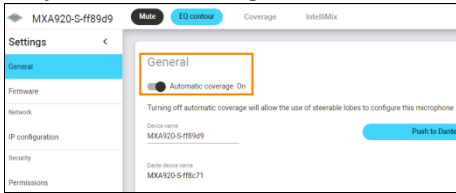
13. Click **Set**. The saved location will appear in the thumbnail.

14. Click **Next** after locating 3 corners and the logo. Or click **Reset** to relocate all of them.

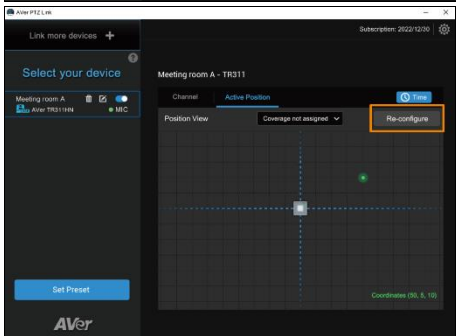
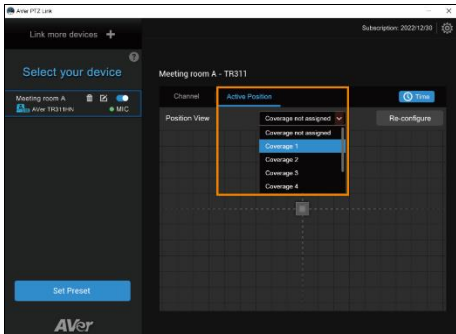
15. Make sure the red cross appears in the center of the microphone, and click **Save**.

16. To reconfigure, click **Back**.


To adjust or add a coverage area:



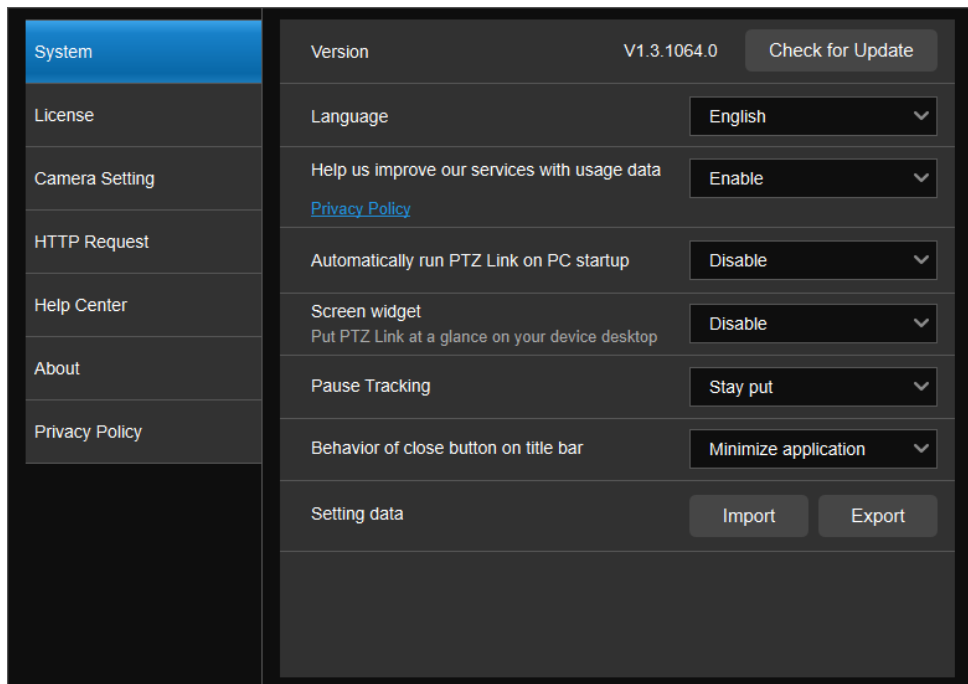
1. Open the MXA920 web application.
2. Go to **Settings > General > Automatic coverage**.
3. To add a mix of up to 8 dynamic and dedicated coverage areas, turn on **Automatic coverage**.
 - The default setting is a 30 by 30 foot (9 by 9 meter) dynamic coverage area.
4. To add more coverage areas, go to **Coverage > Add coverage**.
5. On the **Active Position** tab, select **Coverage not assigned** to use all MXA920 coverage areas.
6. Or select a coverage area that you have added in the MXA920 web application from the drop-down list.
 - Talker positions outside of the selected coverage area won't be picked up by AVer PTZ Link.
7. To change coverage areas, click **Re-configure**.




AVer PTZ Link System Settings



Click the **System settings** icon  on the upper right corner of the main page to configure system settings.

System



System	Version	V1.3.1064.0	Check for Update
License	Language	English	▼
Camera Setting	Help us improve our services with usage data	Enable	▼
HTTP Request	Privacy Policy		
Help Center	Automatically run PTZ Link on PC startup	Disable	▼
About	Screen widget	Disable	▼
Privacy Policy	Put PTZ Link at a glance on your device desktop		
	Pause Tracking	Stay put	▼
	Behavior of close button on title bar	Minimize application	▼
	Setting data	Import	Export

Item	Description
Version	View software version and check for update.
Language	Select a preferred language.
Help us improve our services with usage data	Opt-in to or opt-out of providing usage data.
Automatically run AVer PTZ Link on PC startup	Add AVer PTZ Link to run at startup.
Screen widget	<ul style="list-style-type: none">● Enable or disable a floating window when minimizing AVer PTZ Link.<ul style="list-style-type: none">-  Disable all devices on the device list. Or set the camera's pause position in Pause Tracking.

	<ul style="list-style-type: none"> -  Resume all devices on the device list. -  Maximize AVer PTZ Link. ● The screen widget also works in Zoom.
Pause tracking	Select if a camera stays at the last position or return to Preset 0 when tracking is paused.
Behavior of close button on title bar	Choose to minimize or quit AVer PTZ Link when closing the window.
Setting data	Export or import device settings such as camera-microphone pairs, presets, and channels when changing computers. This data doesn't include license information.

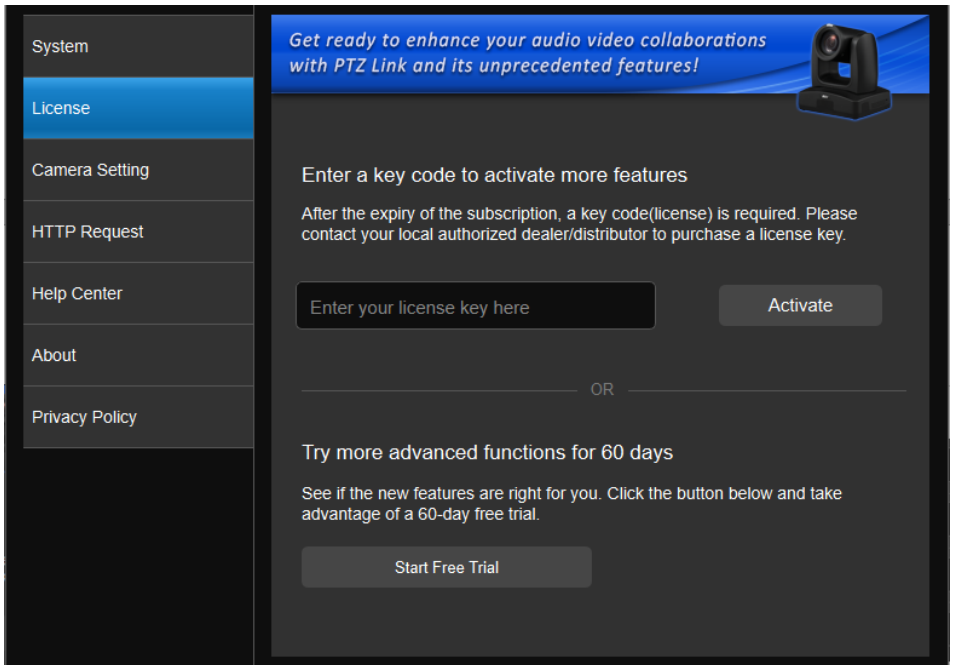
License

Enter your license key to upgrade to the premium plan.

- One license key can only be activated on one computer.
- To transfer your license key to another computer, deactivate the license key from your old computer and activate it on your new computer.

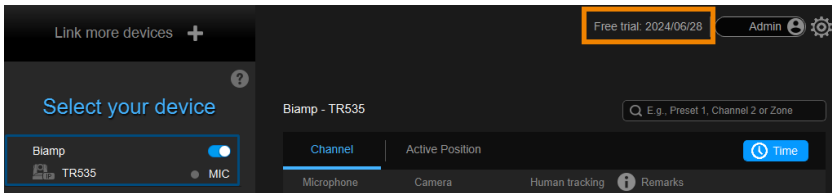
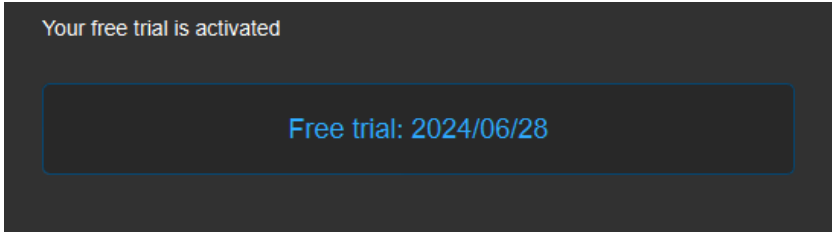
To start a 60-day free trial:

1. Go to the **License** tab, then click **Start Free Trial**.



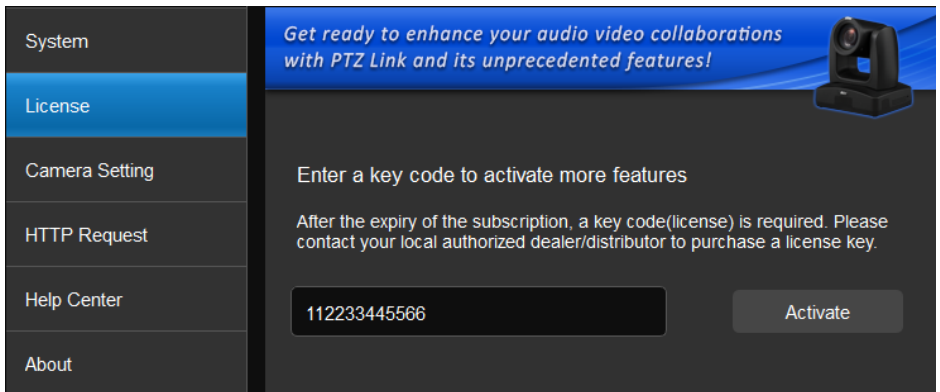
2. Subscribe for the latest updates on AVer PTZ Link.

3. Your free trial starts immediately. Check the free trial expiration date on the **License** tab or on the upper-right corner of the main page.



To activate the license key:

1. Go to the **License** tab, enter your license key, and click **Activate**.




2. Follow the on-screen instructions to complete the activation.

Note: If you upgrade to the Premium plan during your free trial period, you will immediately lose access to the remainder of your free trial. You cannot reactivate this trial. Click **No, start Free Trial first** to use the free trial first.

To deactivate the license key:

1. Go to the **License** tab, then click **Deactivate**.

System	Current Plan Status	Premium 
License	Date activated	2022/09/12
Camera Setting	Expiration date	Unlimited
HTTP Request	Your key code	XFZADB1CDA0D1DZE
Help Center	Deactivate your license Once this license key is deactivated on this PC, you can utilize the key on another PC.	Deactivate
About	Contact Information jo.kuo@aver.com	Update Contact Info
Privacy Policy	AVer	

2. Follow the on-screen instructions to complete the deactivation.

Camera Setting

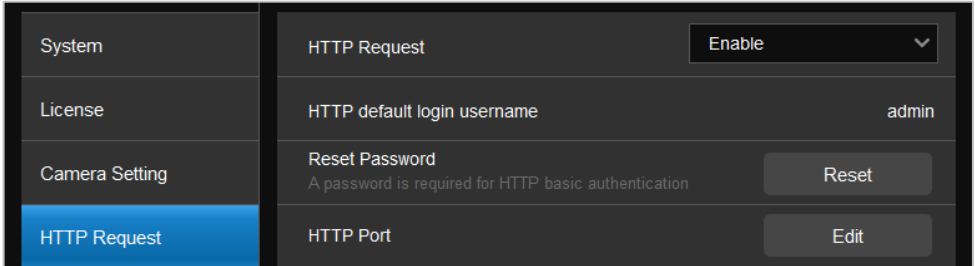
Note: Camera Setting applies to virtual cameras (USB cameras) only.

System	Virtual camera layout	Single
License	Display channel remarks on virtual camera	Off
Camera Setting	Mirror channel remarks	Off
HTTP Request	Switching camera delay time	Off

Item	Description
Virtual camera layout	Select a live view layout for USB cameras: <ul style="list-style-type: none">● Single: When multiple USB camera groups detect sound at the same time, the layout will be a single live view showing one active speaker.● Side-by-side (Windows only): When multiple USB camera groups detect sound at the same time, the layout will be a side-by-side live view showing two active speakers.
Display channel remarks on virtual camera	Turn on to display remarks as text overlays on the live view. To add a remark, enter texts in the Remarks column on the main page.
Mirror channel remarks	Turn on to mirror remarks on the live view.
Switching camera delay time	Set a delay time before switching to another camera's live view for a seamless transition.

HTTP Request

HTTP request allows third-party integration and lets you quickly perform various tasks to your groups on the device list.



1. On the main page, go to **Settings > HTTP Request**.

2. Set up the HTTP request configuration:
- Enable **HTTP Request** from the drop-down list.
 - Click **Reset** to set up a password.
 - Click **Edit** to enter a port number.

3. To execute HTTP requests, open a request URL.

Example `http://admin:3346@192.168.0.22:80/request=disableAll`

Element `http://[account]:[password]@[IP Address]:[port]/request=disableAll`

An HTTP request contains the following elements:

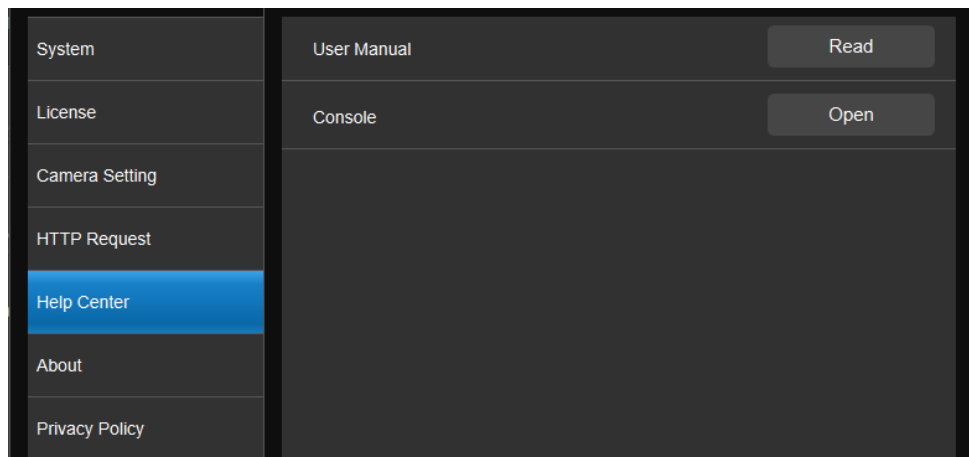
- Account: HTTP default login username "admin".
 - Password: the password you set up in Step 2.
 - IP Address: IP address of your computer.
 - Port: the port number you set up in Step 2.
4. You can also execute any of the following HTTP requests:

Function	Request
Pause all groups	<code>http://[account]:[password]@[IP Address]:[port]/request=pause</code>
Resume all groups	<code>http://[account]:[password]@[IP Address]:[port]/request=resume</code>
Query pause status of all groups	<code>http://[account]:[password]@[IP Address]:[port]/request=queryPauseStatus</code>
Disable all groups	<code>http://[account]:[password]@[IP Address]:[port]/request=disableAll</code>
Enable all groups	<code>http://[account]:[password]@[IP Address]:[port]/request=enableAll</code>
Disable a specified group	<code>http://[account]:[password]@[IP Address]:[port]/request=disable&group=[Group ID]</code>
Enable a specified group	<code>http://[account]:[password]@[IP Address]:[port]/request=enable&group=[Group ID]</code>

Query status of a specified group

http://[account]:[password]@[IP Address]:[port]/request=queryStatus&group=[Group ID]

Help Center



Item	Description
User manual	Click Read to open the user manual in your browser.
Console	Open a debug console window showing microphone status. You can clear, pause or save the result.

About

View the terms and conditions.

Privacy Policy

View the privacy policy.

Troubleshoot

Which third-party microphone systems are supported?

Please refer to <[Supported Microphones](#)>.

Pause voice tracking

- Mute the microphone on the respective software or web interface to stop reporting audio data to AVer PTZ Link. Or press the physical mute button, if any.
- Turn on AVer PTZ Link screen widget. Click the pause button on the screen widget to disable all groups on the device list. Click the resume button on the screen widget to resume all groups.

How does Shure microphones' Mute function work with AVer PTZ Link?

- If a channel is muted on the Shure web interface, the corresponding channel of AVer PTZ Link will not detect sound.



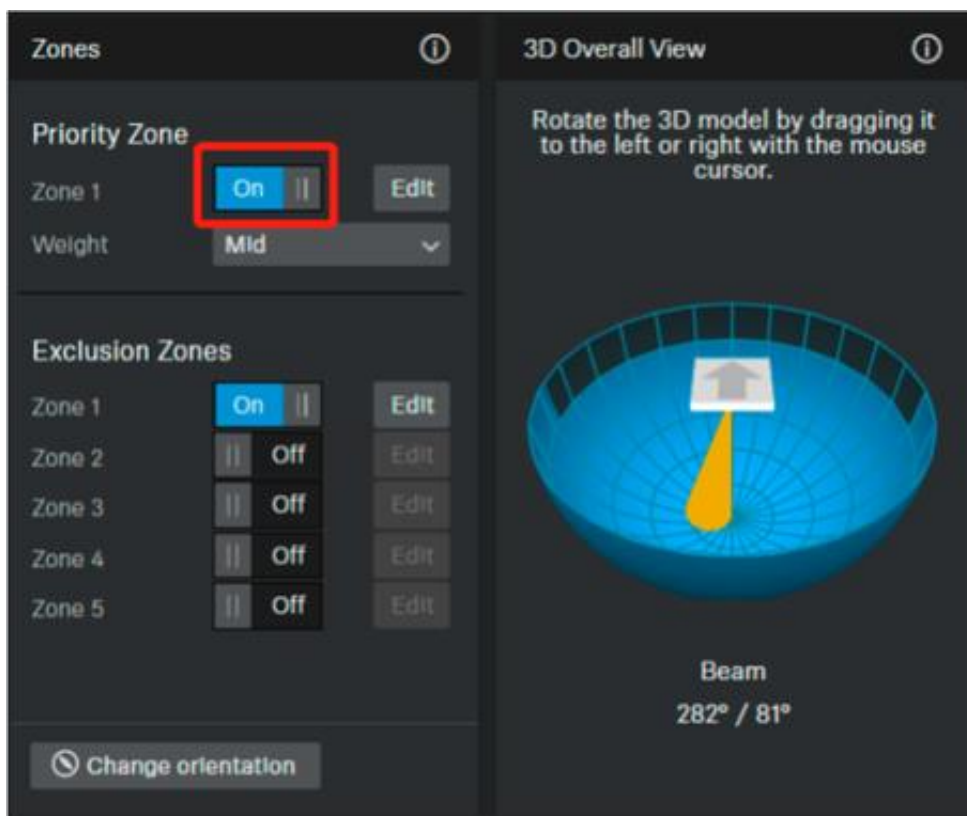
Camera is too sensitive and flickering between presets.

- Select a longer length of time for [Time to Trigger Preset](#).
- If you camera is shared among several camera and microphone groups, set a priority group in [Group Overlay Priority](#).

Sennheiser TeamConnect Ceiling 2 picks up sound from all over the room.

When conversations go back and forth, assign a **Priority Zone** in Sennheiser Control Cockpit to minimize flicking between presets.


For details on the Priority Zone, please visit: https://www.sennheiser-sites.com/responsive-manuals/SCC/EN/index.html#page/SCC_EN/SCC_04_EN.5.3.html#ww1106250.



Appendix

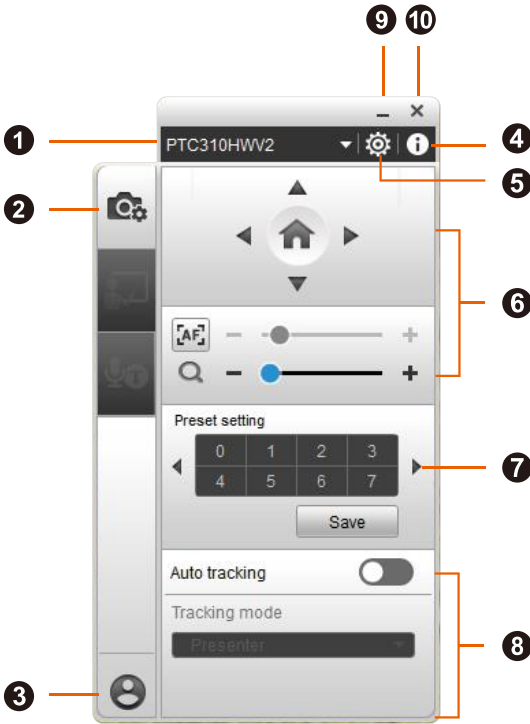
AVerCamera Setting Tool

AVerCamera Setting Tool is a bundled software that supports the operation of AVer cameras when you stream to a video conferencing software.

AVer PTZ Link will launch AVerCamera Setting Tool when you click **Set Preset** to save a preset for USB cameras. You can also double-click the **AVerCamera Setting Tool** icon  on your desktop to launch it.



Control Panel



- 1. **Camera Source**
Select a USB camera from the drop-down list.
- 2. **Control Panel**
- 3. **Account**
Click to open the AVer account login window.
- 4. **Camera Information**
Display camera information such as the IP address.
- 5. **Camera Settings**
Configure image, audio, tracking and system settings.

Note: Menu items may vary depending on your camera model and connection method.

6. Pan, Tilt, Zoom and Focus Controls

Click the **Home** button to go to the home position or reset the pan-tilt position to the center depending on your camera model.

7. Preset Setting

Set up 0-255 preset positions.

First, click to select a preset number you want to save, position the camera using pan and tilt controls, and then click **Save** to save that position. You may return to your defined position at any time by clicking the preset number.

8. Auto Tracking and Tracking Mode

Toggle on auto tracking and select a tracking mode from the drop-down list.

Note: Make sure you have configured the required tracking mode on the camera web interface.

9. Minimize Window

Minimize AVerCamera Setting Tool to the taskbar.

10. Hide Window

Click the **Show hidden icons** button in the taskbar to see the **AVerCamera Setting Tool** icon. Right click on the icon to make active, exit or turn on launch on startup.

